

# Bayside Trail Seating Project

*Request for  
Qualifications*

March 21, 2011

# Bayside Trail Seating Project

*Request for  
Qualifications*

March 21, 2011

# Bayside Trail Seating Project

*Request for  
Qualifications*

March 21, 2011

**PORTLAND PUBLIC ART COMMITTEE**  
**REQUEST FOR QUALIFICATIONS**  
**BAYSIDE TRAIL PUBLIC SEATING**  
**March 21, 2011**

The Portland Public Art Committee (“PPAC”), which administers the Portland, Maine Public Art Program, invites the submission of qualifications for the design and fabrication of public seating to be installed at selected locations along the new Bayside Trail in Portland’s Bayside neighborhoods. The PPAC reserves the right to select multiple artists/designers to produce the public art.

**GOALS:**

The public seating should contribute to the distinct identity of the Bayside Trail and engage the public in discovering site-specific piece(s) of high-quality functional art.

Other goals of the project include:

- Enhance the Bayside Trail experience.
- Create place-making works of art that relate to the context.
- Create appealing works of art that function as public seating.
- Enliven the selected spaces and engage the public.
- Shows well from a distance and year round in all seasons.
- Provide seating that is long-lived (at least 20 years) and easy to maintain.

**CONTEXT:**

Over the past 200 years, the Bayside neighborhoods evolved to include residential, commercial, and industrial use properties. Bayside has historically been home to a rich socio-economic mix, including immigrants, with large numbers of Irish, Scandinavians, Italians and Armenians settling in the neighborhoods. More recently, the Bayside neighborhoods have become home to new immigrants including Cambodians, Vietnamese, Sudanese, Somalis, and Iraqis.

Additionally, the Bayside neighborhoods have the most diverse spectrum of land uses in Portland, including a range of residential properties, light industrial uses, open space and parks, and retail and commercial businesses. Increasingly, Bayside has become home to startup arts venues, artists’ studios, ethnic businesses, and new homeownership.

The Bayside Trail connects the East Bayside and Bayside neighborhoods and is a key link connecting the City's most used trails and parks: the popular Back Cove Trail, the Eastern Promenade and Eastern Prom Trail, East End Beach, Deering Oaks and its urban core. In addition to creating a safe transportation and recreation corridor through the redeveloping neighborhoods of Bayside, this ribbon of green is providing a new gateway for Maine's largest city and is a catalyst for further planned growth and development.

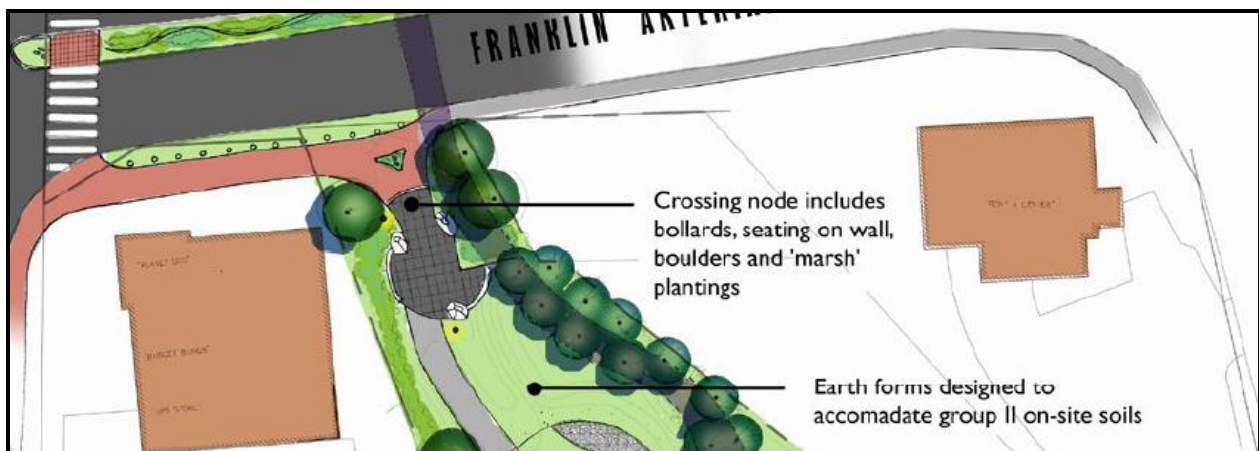
The initial construction of the Trail has been completed and has become a popular destination in the city. In coming years the trail should become a focal point for cultural activities and community programs, contribute to the economic vitality of the city, and improve the quality of life for Portland residents, workers and visitors. A portion of the completed section of the Trail has been set aside to recognize and honor Dr. Martin Luther King, Jr.

Three prominent locations have been identified as appropriate locations for this public art seating. Each location exists in a busy urban context. Successful designs will be timeless and make a strong visual and experiential statement in the context. This public art seating will be supplemental to conventional seating to be placed along the Trail.

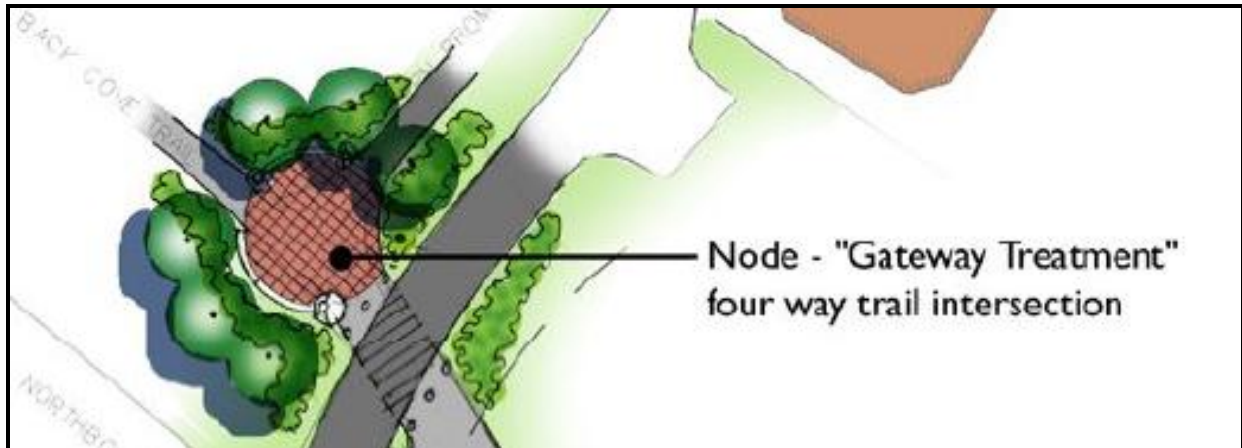
**Elm Street Plaza:** This major plaza is seen as a gathering place for large public events. A fixed seating wall helps define the space, to be supplemented by public art seating, where the Trail diverges into two paths. (See Attachment A for site plan.)



**Trail Gateway behind Planet Dog:** Adjacent to the Franklin Street Arterial, this circular space serves as a gateway between the east and west sides of the Trail, is adjacent to the location designated for recognition of Dr. Martin Luther King, Jr. and provides excellent views to the City. (See Attachment B for site plan.)



**Intersection with the Loring Pathway:** At the easternmost end of the Trail, just beyond the Tukey's Bridge overpass, is the intersection of the Trail with the new pathway down from the Loring Memorial and connecting to the Eastern Prom and Back Cove Trails. Additional infrastructure will be added here to create an opportunity for public art seating. (See Attachment C for site plan.)



#### **ELIGIBILITY:**

This call for qualifications is open to any professional artist, landscape architect, architect, or design professional. Artists/designers should either have some demonstrated capability for designing and constructing three-dimensional works of art or team up with someone with that capability.

#### **BUDGET:**

The total budget for this project is \$42,500. Although there is not a budget limit per piece, the PPAC intends that this budget will fund three public seating pieces or groupings, by multiple artists/designers. These funds must cover all costs, including design fee, materials and fabrication, engineering, insurance, shipping, and installation of the work. The budget does not include funds for travel.

#### **SUBMISSION REQUIREMENTS:**

Letter of Interest. State your interest in and qualifications for the project (including relevant qualifications for any members of a proposed team). Include a brief statement of your work process, and how you would consider proceeding with this project if selected.

Resume/C.V. Highlight any experience with site-specific artwork and commissions.

Images. Include up to 12 images of your representative work, especially images that show completed work in contextual responses. Each image must be saved as an individual 300 dpi JPEG file, no larger than 1MB.

**DEADLINE:**

- ❑ Thursday April 28<sup>th</sup>, 3:00 p.m., Eastern Standard Time
- ❑ Electronic submissions accepted by email at [publicart@portlandmaine.gov](mailto:publicart@portlandmaine.gov) or
- ❑ Hard Copy delivered to

Portland Public Art Program  
389 Congress St.  
4<sup>th</sup> Floor, Attn: Erick Giles  
Portland, ME 04101

- ❑ SUBMISSIONS MUST BE RECEIVED BY THIS DATE AND TIME Late submissions will not be considered.

**SELECTION CRITERIA:**

The Artist or Team submission must include the following:

1. Demonstration of artistic quality in body of past work. (1/3 weight)
2. Any experience in creation of three dimensional sculptural elements of comparable scale and durability of structure and material. (1/3 weight)
3. Knowledge and training in the design arts, fabrication, sculpture or related disciplines. (1/3 weight)

**SELECTION PROCESS:**

1. The Portland Public Art Committee's Commissioning Panel ("the Panel") will review the materials submitted by interested artists/designers and may engage in an interview process with some candidates.
2. Upon completion of the review process the Panel will select three (3) artists/designers finalists to be reviewed by the PPAC.
3. The Panel will then negotiate a stipend contract for design concept with the finalists for a specific site, such concepts and budget estimates to be reviewed by the Panel prior to being brought to the PPAC.
4. The PPAC will review the design concepts and proposed budgets and provide the Panel and artists/designers with comments and guidance for design development.
5. The Panel will execute a contract for design development and budget.
6. The Panel will work with the artists/designers in the design development phase and, upon completion of the final designs and budgets, forward its recommendation to the PPAC.

7. If accepted, the PPAC will forward its recommendations to the Portland City Council for final approval. Once approved by the City Council, the City and the artists/designers will enter into a contract for completion and installation of the work.

The PPAC reserves the right to reject any or all submissions, or to terminate the selection process or the project without prior notice.

#### **PUBLIC ART POLICY:**

The Portland, Maine City Council adopted the Portland Public Art Program in April 2000 in order to preserve, restore, enhance and expand the City's public art collection. The text of the Public Art Program ordinance and other information about the program can be found at: <http://www.portlandplanning.org/cbpubart.htm>

#### **ADDITIONAL INFORMATION REGARDING THIS PROJECT:**

May be found at <http://www.portlandplanning.org/baysidetrailartproject.asp>

#### **QUESTIONS:**

Questions may be posed to Erick Giles (207) 874-8723 or via email at [egiles@portlandmaine.gov](mailto:egiles@portlandmaine.gov)

The answers to all questions posed will be posted on line at <http://www.portlandplanning.org/baysidetrailartproject.asp> four days before the submission deadline.

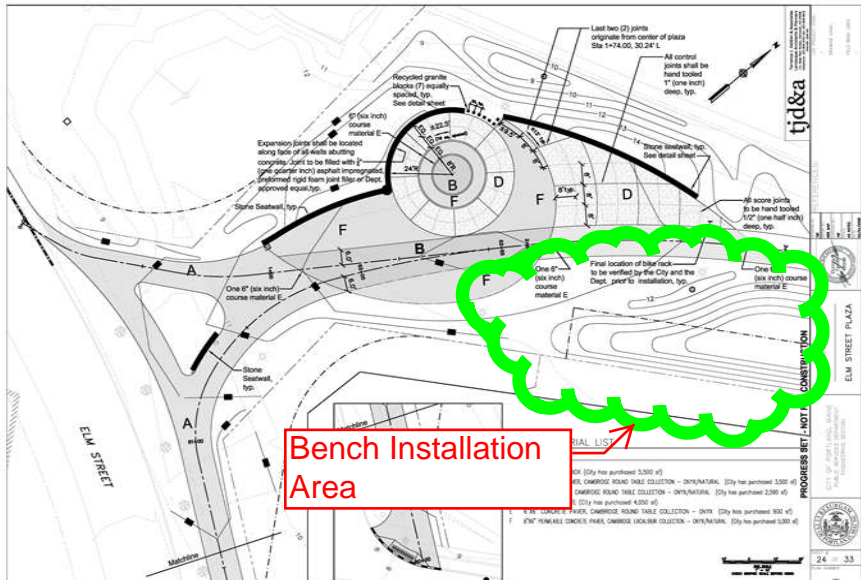
TENTATIVE TIMELINE	
April 28, 2011	RFQ Submissions due
Early-May	Commissioning Panel completes review of submissions and selects three (3) artists/teams
Mid-May	PPAC receives recommendation report of Commissioning Panel selection
Late-May	Commissioning Panel executes stipend for design concepts
Early-June	Submission of design concepts due to Commissioning Panel
Mid-June	Commissioning Panel completes review of design concepts and forwards recommendations to PPAC
Late-June	PPAC approves/denies design concepts

<b>Early-July</b>	Commissioning Panel executes contracts for design developments
<b>Mid-August</b>	Submission of design developments/budgets due to Commissioning Panel
<b>Mid-August</b>	Commissioning Panel completes review of design developments/budgets and forwards recommendations to PPAC
<b>Early-September</b>	PPAC approves/denies design developments/budgets and forwards recommendation to City Council
<b>September-October</b>	City Council approves design developments and executes contracts to construct

#### **ATTACHMENTS**

- A. Elm Street Plaza
- B. Trail Gateway behind Planet Dog
- C. Intersection with the Loring Pathway



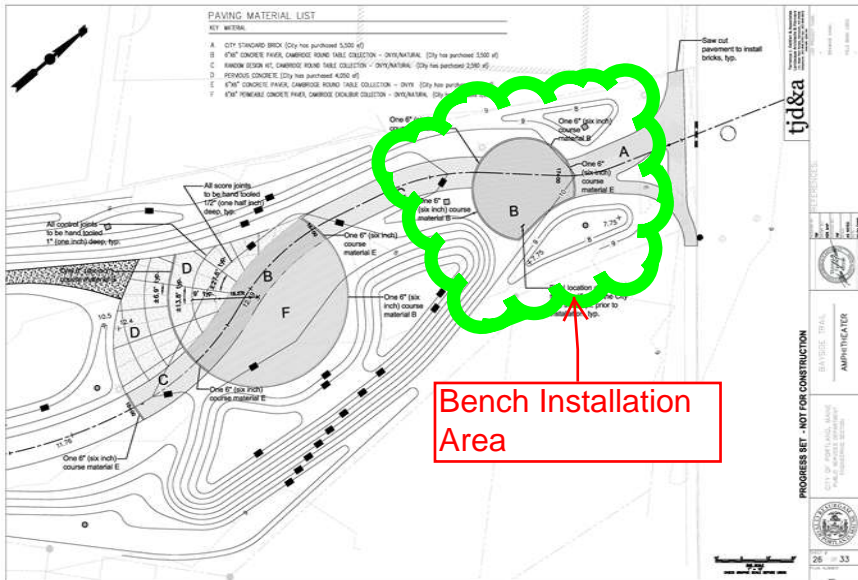




# PAVING MATERIAL LIST

## KEY MATERIAL

- A CITY STANDARD BRICK (City has purchased 5,000 sf)
- B 4"x6" CONCRETE PAVES, CAMBRIDGE ROUND TABLE COLLECTION - DRY/NATURAL (City has purchased 5,000 sf)
- C RANDOM DESIGN HX, CAMBRIDGE ROUND TABLE COLLECTION - DRY/NATURAL (City has purchased 2,500 sf)
- D PERVIOUS CONCRETE (City has purchased 4,000 sf)
- E 4"x6" CONCRETE PAVES, CAMBRIDGE ROUND TABLE COLLECTION - DRY/N (City has purchased 5,000 sf)
- F 4"x6" PERVIOUS CONCRETE PAVES, CAMBRIDGE DOUBBLE COLLECTION - DRY/NATURAL (City has purchased 5,000 sf)



tjd&a

PROGRESS SET - NOT FOR CONSTRUCTION

BAYSIDE TRAIL

AMPHITHEATER

CITY OF PORTLAND, MAINE  
PUBLIC WORKS DEPARTMENT  
DESIGNING SECTION



26 OF 33

